



# **Pride In Our Pocket Parks Campaign**

**October 2, 2010  
Charrette Reference**

*The Charrette Reference captures the ideas and discussions  
from the October 2, 2010 Pride in our Pocket Parks Campaign Charrette.  
This reference is a springboard for the neighborhood associations  
with the guidance of the GNRC and the City's Recreation and Public Works Departments.*

## Table of Contents

Charrette Goals  
Charrette Schedule  
Small Group Breakouts  
City Park System Wish List  
Individual Park Ideas from Inventory,  
Resident Survey and Small Group Sessions  
The Arbors Neighborhood: Ridgewood Park  
Castle Heights Neighborhood: Lafayette Circle Park  
City Central Neighborhood: Bicentennial Park  
East Lakeview Neighborhood: Chartres Park  
East Lakeview Neighborhood: Gulvin Park  
Hildreth Hill Neighborhood: Brook St. Park  
Historic North Neighborhood: Genesee Park  
Historic North Neighborhood: Richards Park  
Historic South Neighborhood: Pulteney Park  
Upper North Neighborhood: Nieder Park  
Washington Park Neighborhood: Jefferson Park  
Western Gardens Neighborhood: Washington Street Park  
Programming Ideas from the 1970's  
Next Steps



### **Charrette Goals:**

- Review current conditions and programming for the 12 neighborhood parks.
- Brainstorm purposes for each of the neighborhood parks to provide the City with a variety of park physical components and programming. This will be a wish list that will help residents move forward with their neighborhood park goals.
- Identify goals for physical improvements and programming for each neighborhood park.
- Discuss next steps and prioritize improvements. The park improvements that will be pursued are ones that neighborhood associations will help accomplish and align with the goals and priorities of the City's Recreation Department and Department of Public Works.

### **Charrette Schedule:**

9:00-9:15 AM

#### **Introductions**

Schedule review  
Goals of charrette

9:15-9:45 AM

#### **12 Park Summaries**

- Location
- Current Conditions
- Uses
- Amenities
- Positives/Negatives
- Possible Ideas

9:45-10:05 AM

#### **Large Group Brainstorming**

- City-wide park programs, social components and physical amenities wish list

10:05-10:45 AM

#### **Small Group Individual Park Planning Session**

- Review existing conditions and personal experiences
- Develop wish list of ideas for programming, social and physical components
- Select items that neighborhood association could rally around

10:45-10:55 AM

#### **Break**

10:55-11:25 AM

#### **Large Group Sharing of Small Group Ideas**

- Each group sharing indiv. park ideas
- Review of what city-wide wish list items were met
- Brainstorm how city-wide wish list items not met could fit into other parks

11:25-11:40 AM

#### **Next Steps**

- Charrette report
- Move forward with neigh. assoc. ideas
- Review of City role
- Prioritize park ideas to pursue
- Brainstorm fundraising/collaboration options



## **PRIDE IN OUR POCKET PARKS CAMPAIGN**

*OCTOBER 2, 2010 CHARRETTE REPORT & NEXT STEPS*

**Small Group Breakout**

**Group 1 guided by Sage Gerling (GNRC)**

1. Lafayette Circle
2. Brook Street Park
3. Nieder Park
4. Bicentennial Park

Participants: Laurie Palmisano, Amanda Garris, Vicki Baroody, Anne Hoyt, and Kelley Monson

**Group 2 guided by Loren Marshall (HWS Architectural/Urban Studies Student)**

5. Richards Park
6. Genesee Park
7. Gulvin Park
8. Clark St. Park

Participants: Katie & Scott Ostrowski and Barb Maw

**Group 3 guided by Jeffrey Blankenship (SUNY-ESF Landscape Architecture Dept. Assistant Professor)**

9. Ridgewood Park
10. Jefferson Park
11. Pulteney Park
12. Washington Park

Participants: Tony DiConstanzo, Marty Davis, Brenda, Jason & Brandon Bryant, and Evelyn Devaney

(Janelle Toner, Director of the City of Geneva's Recreation Department, assisted all three groups with questions about the parks' programming, history, and facilities.)



## CITY PARK SYSTEM WISH LIST

This is a wish list of physical amenities and park programs for the city park system as a whole generated from the large group discussion.

### Physical Amenities

(in order of the brainstorming session)

- Disability accessibility
- Sound gardens
- Brook St. Creek accessibility
- Ball fields
- Under 5 year old play areas and seating
- Kiosk – park programming info
- Sand box
- Merry go-round
- Natural play areas
- Creative play
- Better signage/entrance sidewalks
- Make each park unique – diversify programming, physical amenities, and character
- Lighting and electricity
- Native plants
- Meadows/paths
- Large chess and checkers tables
- Pavilion
- Dog park (large and small dog areas)
- Community garden (with individual plots)
- Less playgrounds with more amenities for a variety of activities
- One park with a pool and bathroom facilities
- Winter play area for sledding (like Bunker Hill)
- Bench donations (not wooden)
- Develop a unique identity/brand for each park

### Programs

(in order of the brainstorming session)

- Concerts
- City-wide basketball
- Open air facility- performances
- Parties
- Open air vendors
- Festivals
- Senior groups or other scheduled in the park
- Healthy/beneficial program activities

The list below was created from observations by HWS student, Loren Marshall, and from the resident survey responses.

### Overall Observations/Ideas

- Swimming pool for the city (located in one of the parks)
- Turning an area of the neighborhood into a winter park/sledding field (the hill east of the arterial bridge)
- City park branded signs with park orientation kiosk and individual park branding
- Bicycle racks at each park
- Benches with memorial placement
- Park kiosk at the Farmer's Market describing each feature
- Graffiti wall on fences- allow youth to decorate specific walls in some of the parks

**PRIDE IN OUR POCKET PARKS CAMPAIGN**

**OCTOBER 2, 2010 CHARRETTE REPORT & NEXT STEPS**



Map created by Loren Marshall. as a visual representation of the charrette brainstorm.

# INDIVIDUAL PARK IDEAS FROM INVENTORY, RESIDENT SURVEY RESPONSES AND SMALL GROUP SESSIONS

These lists were generated from observations by HWS student, Loren Marshall, resident responses from the park survey and the charrette small group sessions. The maps with the visual summaries for the different parks were produced from the diagramming done during the small group sessions.

## **THE ARBORS NEIGHBORHOOD**

### ***Ridgewood Park***

#### ➤ **Current Physical Amenities**

- 2 Trash cans
- 1 Port-a-Potty
- 20 Medium trees
- 1 Playground
- 2 Soccer nets (very good condition)
- 1 Baseball diamond
- 1 Basketball court (3 hoops- very good condition)
- 1 Swing set
- 1 Large parking lot

#### ➤ **Survey Observations**

- Not enough trash cans
- Dog walkers do not pick up after their animals

#### ➤ **Survey Ideas for Physical Amenities**

- More seating
- A community garden for vegetables
- A fenced off dog area
- A pavilion for seating and shelter

#### ➤ **Park's Unique Identity Ideas from Charrette**

- Sports complex

#### ➤ **Physical Amenity Ideas from Charrette**

- Add pavilion
- Add restroom facilities
- Add seating
- Add sidewalk to playground
- Add bleachers
- Possibly a dog park area



#### ➤ **Programming Ideas from Charrette**

- Needs to be identified

#### ➤ **Other Issues Identified in Charrette**

- Conflict with traffic for team sports

#### ➤ **Priorities for Next Steps for Neighborhood Associations from Charrette**

- Needs to be determined

## **PRIDE IN OUR POCKET PARKS CAMPAIGN**

***OCTOBER 2, 2010 CHARRETTE REPORT & NEXT STEPS***



## **CASTLE HEIGHTS NEIGHBORHOOD**

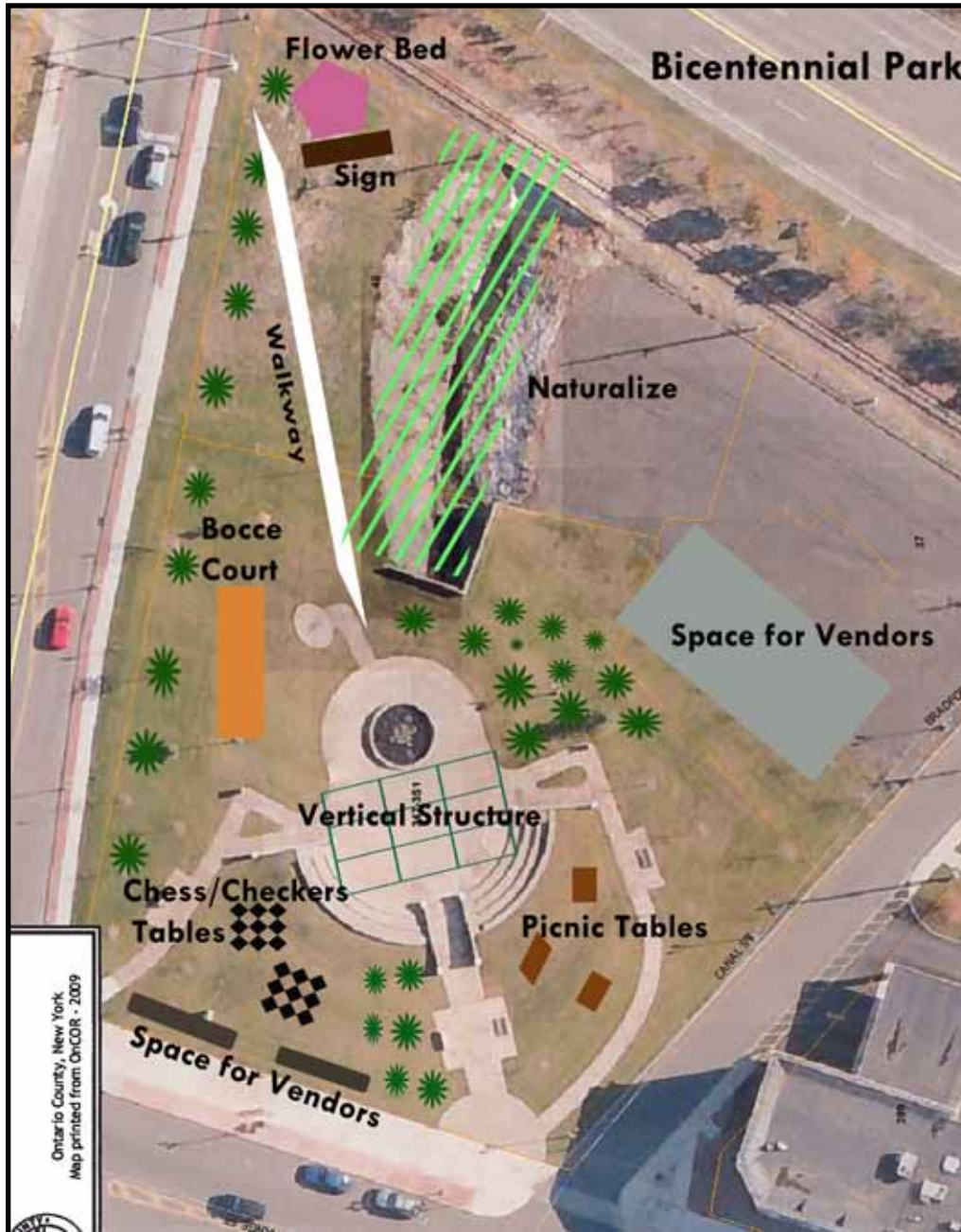
### **Lafayette Circle**

- **Current Physical Amenities**
  - 1 Tall light post (center of circle)
  - 4 Large trees
  - 3 Small trees
  - Feels larger than it looks
- **Survey Observations**
  - Lack of seating, place of rest
  - Mostly dog walkers go to the green space during the day
- **Survey Ideas for Physical Amenities**
  - Park benches
  - Replace the lilac bush that was run over two winters ago
  - Add more plants and flowers
- **Park's Unique Identity Ideas from Charrette**
  - Passive recreational park- reading, sitting and relaxing
- **Physical Amenity Ideas from Charrette**
  - Create barriers with plantings to discourage drivers cutting across
  - Need water or watering system for establishment of plants
  - Add benches
  - Add plantings
  - Add checker/chess tables (place strategically to discourage drivers cutting across)
  - Storytelling chair and a waterproof bin for donated books
  - Add dog waste bag dispenser
  - Add trash can
- **Programming Ideas from Charrette**
  - Neighborhood picnic
  - Book club (adults or kids)
  - Storytelling sessions
  - Neighborhood chess/checkers challenges
- **Priorities for Next Steps for Neighborhood Associations from Charrette**
  - Barrier to block drivers cutting across
  - Chess/checker tables



## **PRIDE IN OUR POCKET PARKS CAMPAIGN**

**OCTOBER 2, 2010 CHARRETTE REPORT & NEXT STEPS**



Map created by Loren Marshall. as a visual representation of the charrette brainstorm.

## **CITY CENTRAL**

### ***Bicentennial Park***

- **Current Physical Amenities**
  - Fountain (center of circle)
  - “Seating” in the curved levels
  - 20 Medium trees line the edge of the green space
- **Park’s Unique Identity Ideas from Charrette**
  - Lunch time eating area
  - Concert and event location
  - Passive games or relaxing area
- **Physical Amenity Ideas from Charrette**
  - Add plantings (trees and bushes) along the sightlines (Exchange and Lake streets, railroad) and the circle platform area
  - Add seating along the Exchange Street. Consider doing art/sculptural benches for visual intrigue
  - Chess/checker tables
  - Allow Farmer’s Market food vendors during the summer
  - Seating (such as picnic tables) for lunch
  - Create a path to the lakefront
  - Naturalize area along creek
  - Create a covering for shade (such as fabri sail)
  - Low fence along railroad for safety issues
  - Crosswalk to cross Exchange St.
  - Park sign on Lake St. at the railroad tracks
  - Possibly bocce
- **Programming Ideas from Charrette**
  - Open air concerts, plays
  - Event site (such as graduation or weddings)
  - Open air vendors
- **Priorities for Next Steps for Neighborhood Associations from Charrette**
  - Plantings along the park’s sightline (especially railroad) and near the circle platform area
  - Seating along Exchange St.
  - Park sign on Lake St. near railroad



## **PRIDE IN OUR POCKET PARKS CAMPAIGN**

***OCTOBER 2, 2010 CHARRETTE REPORT & NEXT STEPS***



## **EAST LAKEVIEW NEIGHBORHOOD**

### ***Chartres Park***

- **Current Physical Amenities**
  - Softball field and backstop
  - 2 team benches
  - Soccer field (sometimes lined)
  - Partial fencing along edge near houses
- **Park's Unique Identity Ideas from Charrette**
  - Needs to be identified
- **Physical Amenity Ideas from Charrette**
  - Enhance large field space
- **Programming Ideas from Charrette**
  - Needs to be identified
- **Priorities for Next Steps for Neighborhood Associations from Charrette**
  - Needs to be identified





Map created by Loren Marshall. as a visual representation of the charrette brainstorms.

## Gulvin Park

### ➤ Current Physical Amenities

- 3 Trash cans
- 6 Large trees
- 2 Medium trees
- 1 Swing set (new playground in construction)
- 1 Baseball diamond
- 1 Bleacher (5 levels)
- 1 Basketball court (2 hoops)
- Pavilion (in construction)
- Bridge (new one installed this summer)

### ➤ Park's Unique Identity Ideas from Charrette

- Needs to be identified

### ➤ Physical Amenity Ideas from Charrette

- Needs to be identified

### ➤ Programming Ideas from Charrette

- Needs to be identified

### ➤ Priorities for Next Steps for Neighborhood Associations from Charrette

- Needs to be identified



**PRIDE IN OUR POCKET PARKS CAMPAIGN**

*OCTOBER 2, 2010 CHARRETTE REPORT & NEXT STEPS*



## **HILDRETH HILL NEIGHBORHOOD**

### **Brook Street Park**

#### ➤ **Current Physical Amenities**

- 2 Trash cans (one by playgrounds, one by tennis courts)
- 2 Parking lots (one by the tennis courts, one by the baseball back stop)
- 2 Playgrounds (one big, one small)
- 2 Swing sets (one big, one small)
- 1 Baseball field (backstop is in good condition, diamond is overgrown by grass)
- 3 Tennis courts (very good condition)
- 1 Basketball court (fair condition – 2 hoops / no lines)

#### ➤ **Survey Observations**

- Hardly ever used, except for the tennis courts
- Visited by families during the day, and teenagers later in the evening
- Lack of activity/programming on lawn
- Little use of baseball diamond
- Dog walkers are the most common users of the green space
- Not very accessible, no sidewalks or bike paths
- Some vandalism and poor behavior

#### ➤ **Survey Ideas**

- Add in crosswalks at the north and south ends of the block with appropriate signage
- Dog park with fencing
- Short trail with fitness stations around the perimeter of the park
- Add in Lighting

#### ➤ **Park's Unique Identity Ideas from Charrette**

- Add amenities to draw more adult usage
- Possibly a dog park

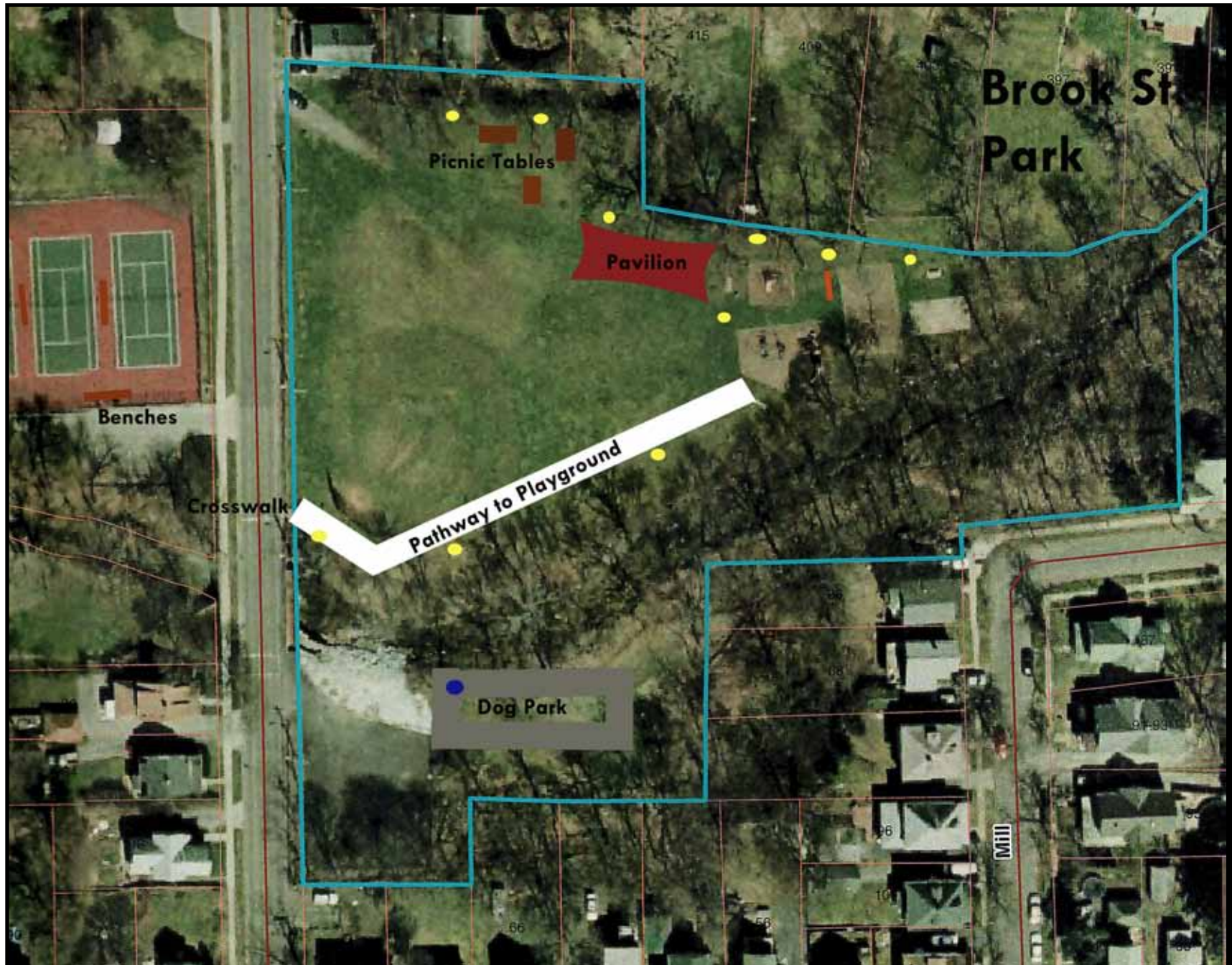
#### ➤ **Physical Amenity Ideas from Charrette**

- Add path for strollers from parking lot to playground/basketball court area
- Add a crosswalk across Brook St. from west side sidewalk and tennis courts to east side park
- Add sidewalk on the east side of Brook St. (use permeable paving if possible)
- Add seating near softball area and playground
- Add dark sky lighting including playground area
- Maybe add a dog park near parking area south of the creek (although concern about dog waste going into creek)
- Add picnic tables



## **PRIDE IN OUR POCKET PARKS CAMPAIGN**

**OCTOBER 2, 2010 CHARRETTE REPORT & NEXT STEPS**



Map created by Loren Marshall, as a visual representation of the charrette brainstorm.

- Add a place for neighborhood gatherings (pavilion near playground)
  - Paint backstop and tennis court fencing
  - Possibly expand playground
  - Plant slope with plants
  - Bridge across creek
  - Pavilion near playground
  - Paint basketball court lines and add hoop nets, plus add miniature hoops for younger kids
  - Possible seating by tennis courts (although room is an issue)
  - Add bicycle racks at parking lot entrance
- **Programming Ideas from Charrette**
- Concerts
  - Reengage use in parks (book club, mom/child play dates)
  - Increase neighborhood policing within park, especially around playground and basketball court and neighbor presence
- **Other Ideas from Charrette**
- City of Geneva Green Committee to focus on Castle Creek erosion and access issues. Advice from an engineer is needed and help from City.
- **Priorities for Next Steps for Neighborhood Associations from Charrette**
- Pathway to playground
  - Better neighborhood policing within park
  - Better lighting
  - More picnic tables and seating around softball area





Map created by Loren Marshall. as a visual representation of the charrette brainstorm.

## **HISTORIC NORTH**

### **Genesee Park**

#### ➤ **Current Physical Amenities**

- 1 Dog waste bag dispenser
- 1 Trash can
- 1 Bench
- 7 Large trees
- 12 Small shrubs

#### ➤ **Park's Unique Identity Ideas from Charrette**

- As is the park is beautiful- Passive recreational park and connector

#### ➤ **Physical Amenity Ideas from Charrette**

- Enhance with plantings along diagonal walk
- Add few more benches
- Add landmarks walk kiosk with a walking tour brochure
- Adopt flower beds by surrounding churches

#### ➤ **Programming Ideas from Charrette**

- Surrounding church involvement and usage
- Community gathering area

#### ➤ **Priorities for Next Steps for Neighborhood Associations from Charrette**

- Needs to be determined



**PRIDE IN OUR POCKET PARKS CAMPAIGN**

**OCTOBER 2, 2010 CHARRETTE REPORT & NEXT STEPS**



## Richards Park

### ➤ Current Physical Amenities

- 1 Trash can
- 1 Large tree (center of rectangle)
- 2 Playgrounds (one big, one small)
- 2 Swing sets (one big, one small)
- 1 Basketball court (very good condition – 3 hoops / lines)

### ➤ Survey Observations

- Pickup games of basketball
- Most of the people who use it, live in the neighborhood and therefore walk to get there
- Some graffiti and cracked equipment
- Not safe during the night due to the lack of lighting
- Trash on the ground (used condoms, drugs, food bags, drink bottles)

### ➤ Survey Ideas

- Section for a dog park
- Space for exercise/running
- Plant more trees/flowers
- Add tables and benches
- Outdoor grill for neighborhood cookouts
- Pavilion or other form of shelter
- Repair fencing along the edge
- Improve the entrance

### ➤ Park's Unique Identity Ideas from Charrette

- Art park and dog park (divide up space between the two)

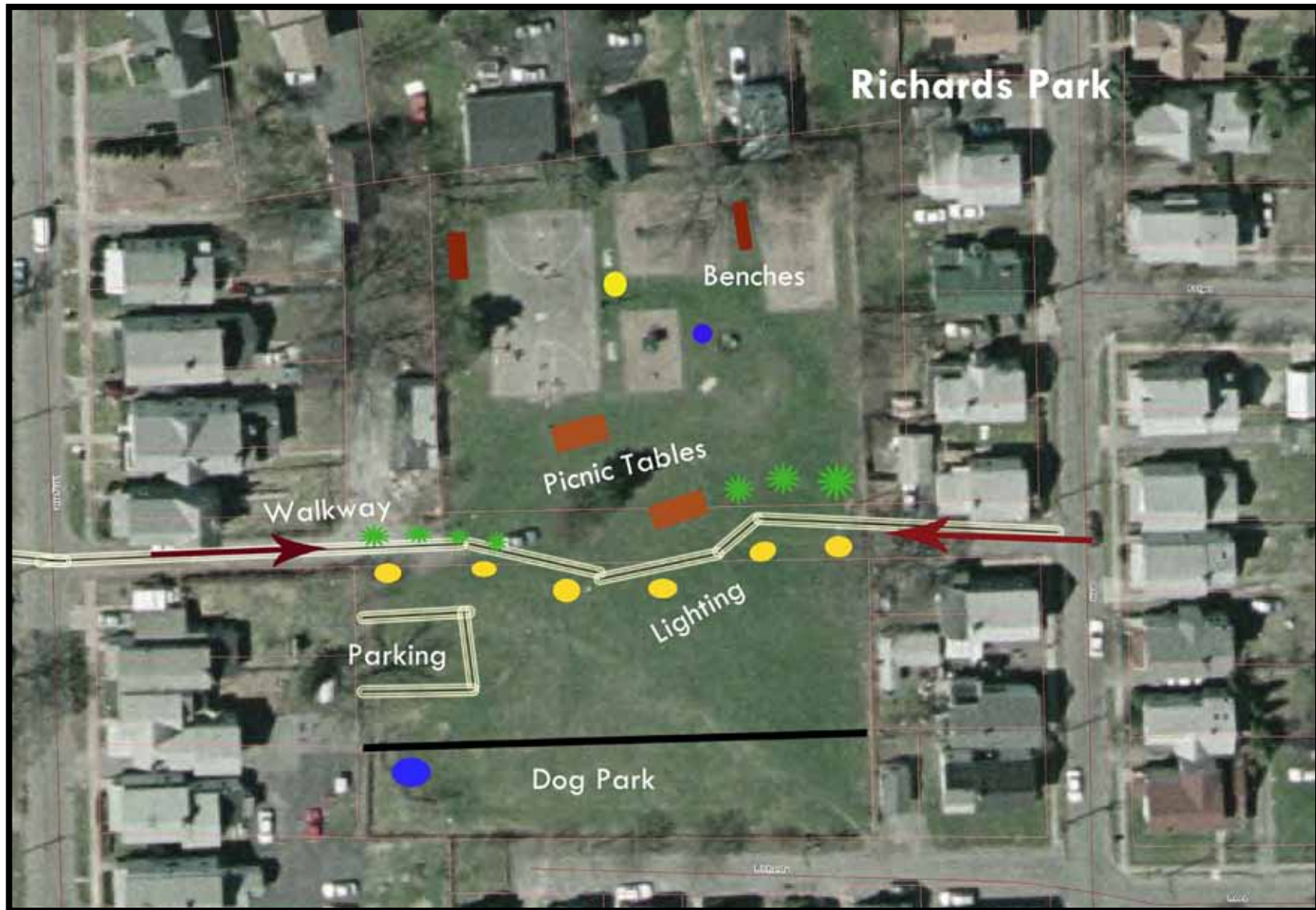
### ➤ Physical Amenity Ideas from Charrette

- Need to open up park and add signage at entrances (John St. and Lafayette Ave.)
- Add parking area (3 spaces)
- Reorient pathway to designate areas within the park
- Add benches and picnic tables (community build)
- Add adult swing area
- Add bicycle rack
- Create a dog park (separate areas for large and small dogs)
- Create a community garden (needs water source)
- Refresh/clean-up fences on perimeter
- Space for art expression (“Art Park”)
- Improve lighting
- Add trash and recycling cans



**PRIDE IN OUR POCKET PARKS CAMPAIGN**

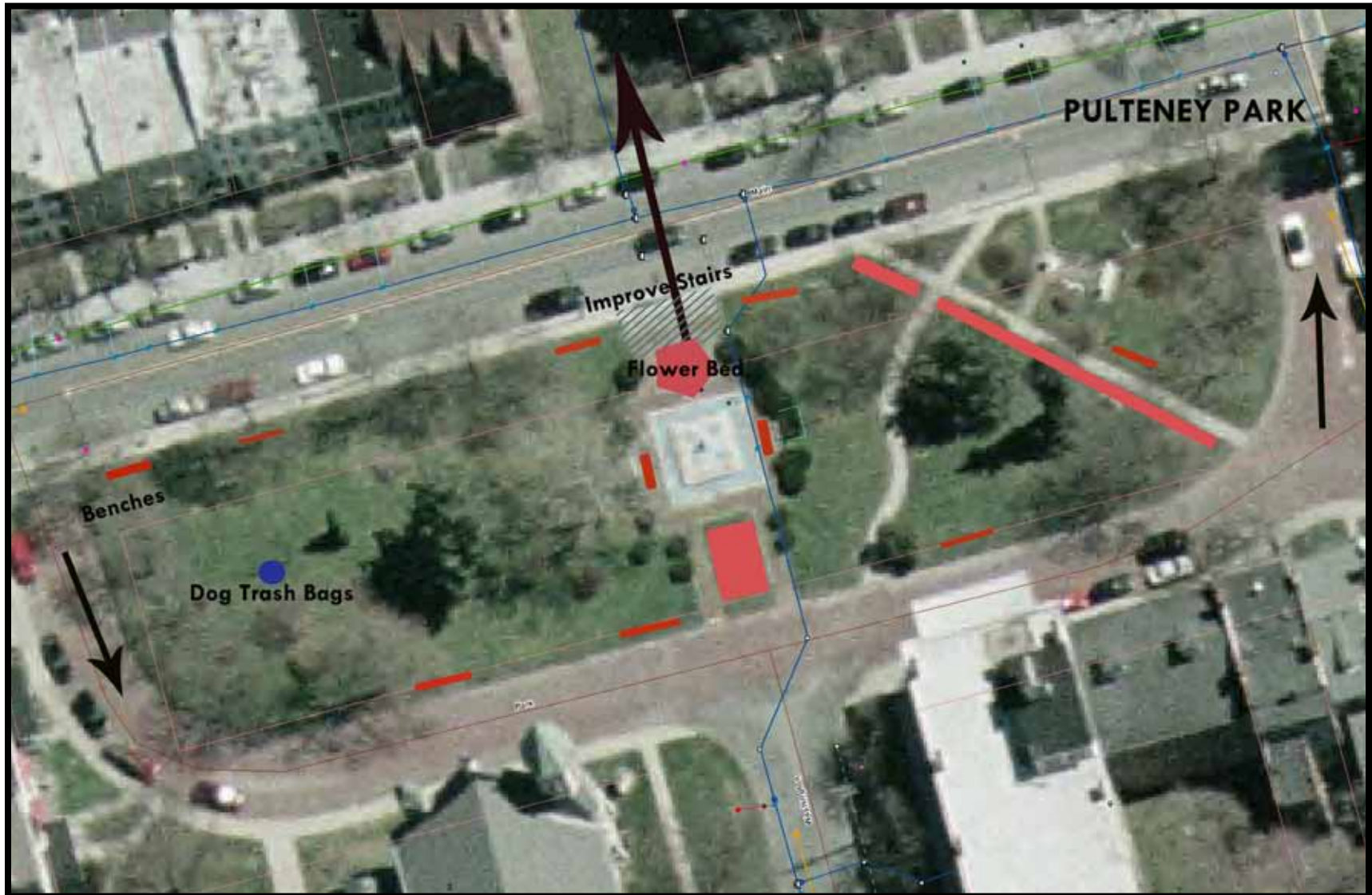
**OCTOBER 2, 2010 CHARRETTE REPORT & NEXT STEPS**



Map created by Loren Marshall, as a visual representation of the charrette brainstorm.

- Add water source
- **Programming Ideas from Charrette**
  - Games (help from parents)
  - Music/pizza party night
  - Child/teen block parties
  - Church use of park
- **Other Issues from Charrette**
  - The park is secluded. Group question: If things do not work is it bad to remove the park?
- **Priorities for Next Steps for Neighborhood Associations from Charrette**
  - Entrance signage and open entrance up at Lafayette Ave. with possibly 3 parking spaces and bicycle rack
  - Entrance sign and open entrance up at John St.
  - Seating- benches around play areas
  - Picnic tables around tree
  - Adult swings
  - Aesthetic priorities: lighting, electricity, water source and fence maintenance
  - Themes- art park and dog park (dividing up the park for two distinct themes)





Map created by Loren Marshall. as a visual representation of the charrette brainstorm.

## **HISTORIC SOUTH NEIGHBORHOOD**

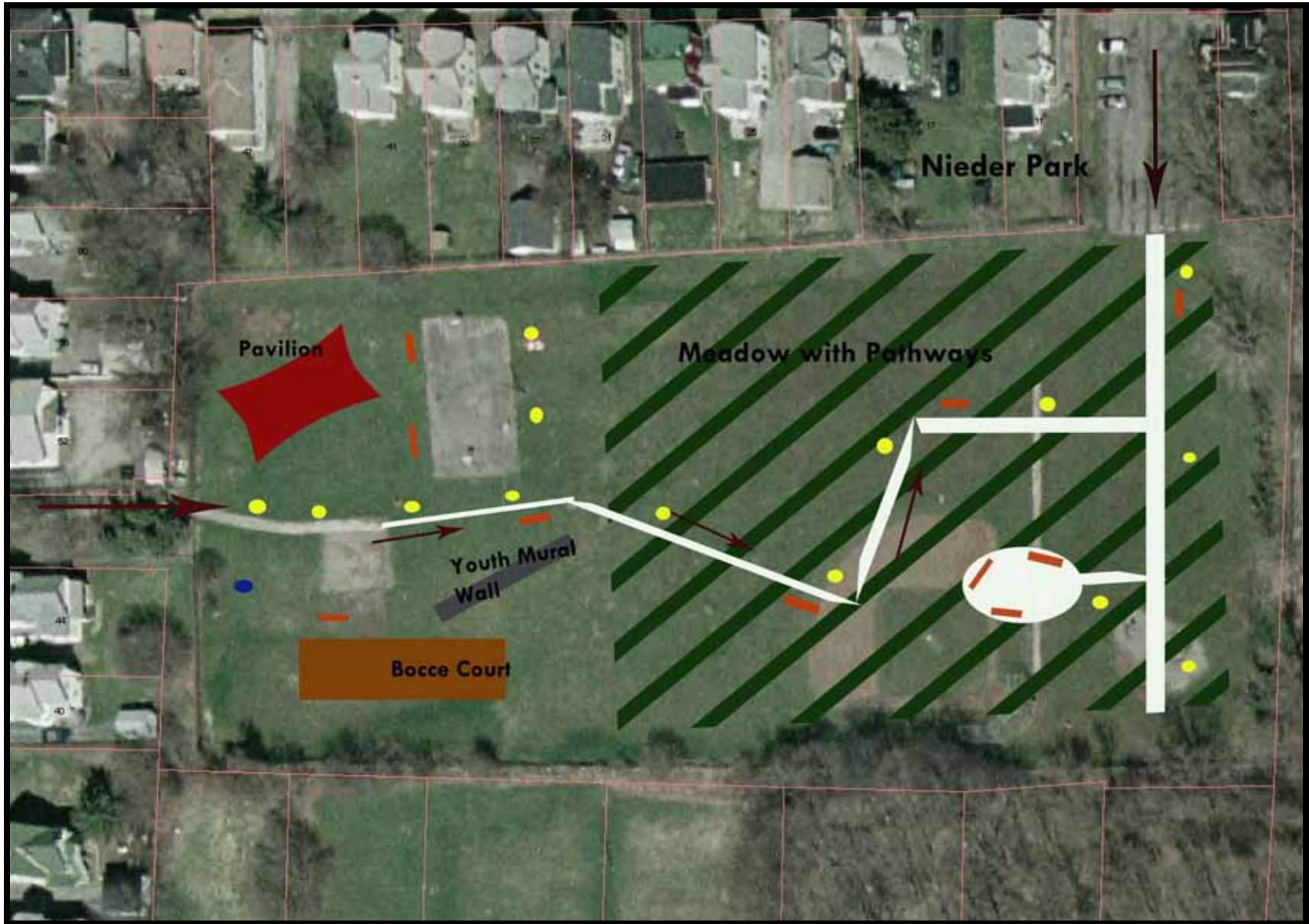
### ***Pulteney Park***

- **Current Physical Amenities**
  - 1 Dog trash container
  - 2 Tall light posts
  - 5 Benches (good condition)
  - 1 Fountain (center of rectangle)
  - Parking around perimeter
- **Survey Observations**
  - Frequently used by pedestrians walking through the area/dog walkers
- **Survey Ideas**
  - Increase the lighting on some of the shrubbery
- **Park's Unique Identity Ideas from Charrette**
  - Memory/history park
- **Physical Amenity Ideas from Charrette**
  - Add memorial benches
  - Add stairs on south side of S. Main St. down to the Rec. Center
  - Fix stairs in front of statue
  - Flower donations from each neighborhood
- **Programming Ideas from Charrette**
  - Needs to be determined
- **Priorities for Next Steps for Neighborhood Associations from Charrette**
  - Need to be determined



**PRIDE IN OUR POCKET PARKS CAMPAIGN**

***OCTOBER 2, 2010 CHARRETTE REPORT & NEXT STEPS***



Map created by Loren Marshall. as a visual representation of the charrette brainstorm.

## **UPPER NORTH NEIGHBORHOOD**

### ***Nieder Park***

#### ➤ **Current Physical Amenities**

- 1 Trash can
- 1 Tall light post (near swing set)
- 1 Baseball diamond (overgrown by grass)
- 1 Basketball court (3 hoops- fair condition)
- 1 Swing set
- 1 Playground

#### ➤ **Park's Unique Identity Ideas from Charrette**

- Youth playground area
- Adult gathering spot
- Natural area park

#### ➤ **Physical Amenity Ideas from Charrette**

- Fitness trail loop: The fields have poor drainage, thus suggested to turn field area into a wildflower meadow with mowed pathways as a walking loop throughout the meadow. Then do a stone dust or asphalt walking/jogging path when possible for better comfort for runners and strollers.
- Add bocce courts with defined space, benches, and signage with rules for bocce
- Improve entrance and lighting along path
- Add an art zone
- Repair basketball courts
- Add seating (use boulders for some of the seating areas)
- Add pavilion near playground
- Add shrubs and trees between entrance and the basketball courts
- Add signage for parking on Ave. B on N. Genesee St.
- Clean-up graffiti

#### ➤ **Programming Ideas from Charrette**

- Needs to be determined

#### ➤ **Priorities for Next Steps for Neighborhood Associations from Charrette**

- Fitness trail loop
- Signage for parking on Ave. B on N. Genesee St.
- Graffiti clean-up
- Better entrance and lighting along path
- More seating





Map created by Loren Marshall. as a visual representation of the charrette brainstorm.

## **WASHINGTON PARK**

### **Jefferson Park**

#### ➤ **Current Physical Amenities**

- 1 Trash can
- 1 Parking Lot
- 2 Playgrounds (one big, one small)
- 1 Swing set
- 1 Merry-go-round (fair condition)
- 1 Baseball field (backstop is in fair condition, diamond is overgrown by grass)
- 1 Basketball court (very good condition – 3 hoops / lines)
- 2 Poles (possibly for volleyball net)

#### ➤ **Survey Observations**

- Little activity, mostly occupied by youth during after school hours
- Trash, vandalism and cigarette butts around the area

#### ➤ **Survey Ideas**

- Add in dog waste bag dispensers
- Use the large space for events/programming

#### ➤ **Park's Unique Identity Ideas from Charrette**

- Dog park

#### ➤ **Physical Amenity Ideas from Charrette**

- Consider a dog park area
- Needs more parking
- Fix volleyball area (sand)
- Address drainage issues
- Provide a buffer with cemetery
- Consider not mowing all of lawn area
- Add fencing
- Add trash cans
- Add kiosk for park information and liability
- Provide a stroller surface

#### ➤ **Programming Ideas from Charrette**

- Needs to be determined

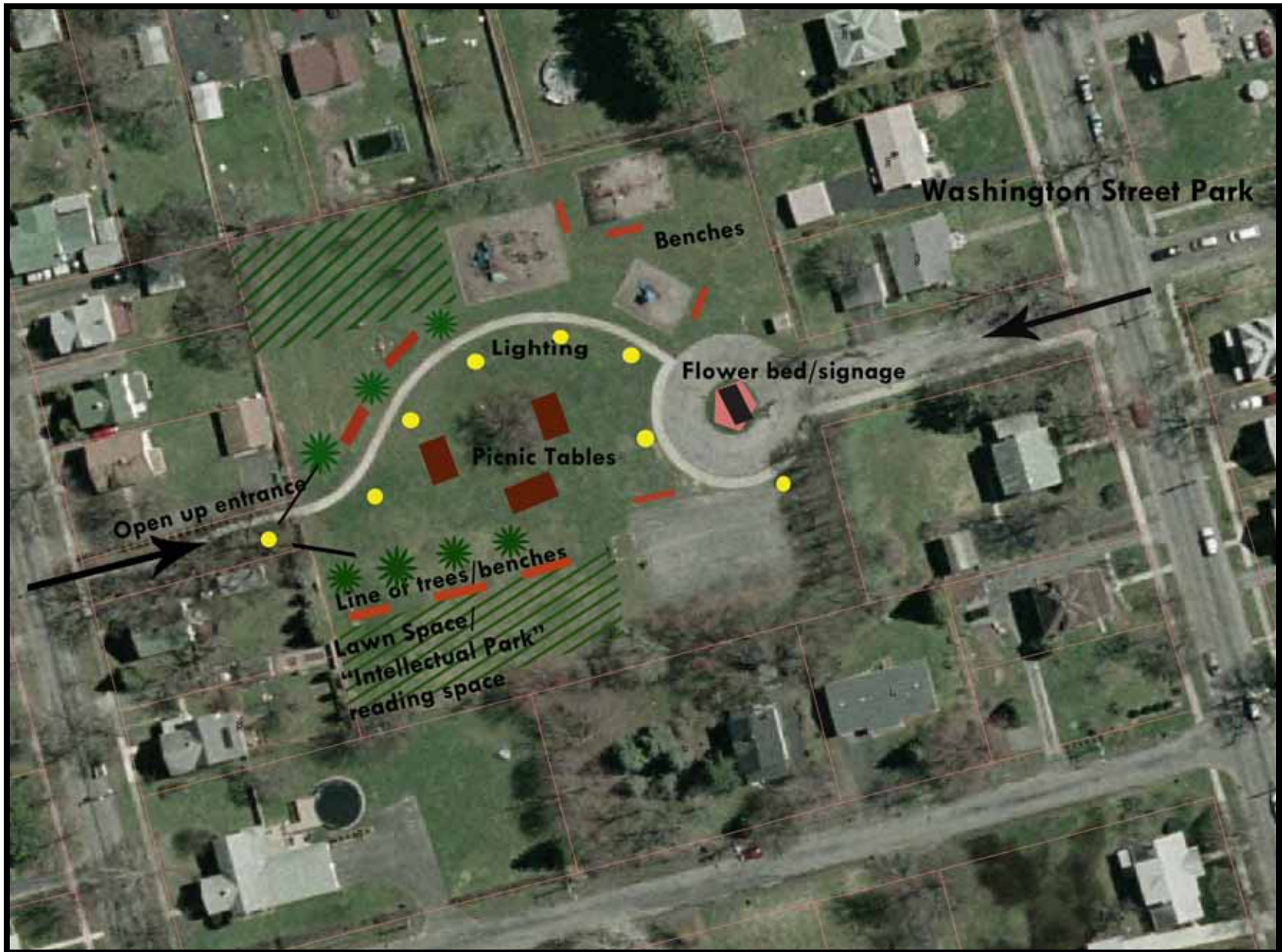
#### ➤ **Priorities for Next Steps for Neighborhood Associations from Charrette**

- Needs to be determined



## **PRIDE IN OUR POCKET PARKS CAMPAIGN**

**OCTOBER 2, 2010 CHARRETTE REPORT & NEXT STEPS**



Map created by Loren Marshall. as a visual representation of the charrette brainstorm.

## **WESTERN GARDENS NEIGHBORHOOD**

### ***Washington Street Park***

- **Current Physical Amenities**
  - 1 Trash can
  - 1 Basketball court (2 hoops- no lines)
  - 1 Picnic table
  - 3 Playgrounds (2 new- 1 old)
  - 1 Swing set
  - 1 Large tree (center of green space)
- **Park's Unique Identity Ideas from Charrette**
  - Mixed use- intellectual park both active and passive
- **Physical Amenity Ideas from Charrette**
  - Add zen garden
  - Add wifi
  - Add benches
  - Fix signage
- **Programming Ideas from Charrette**
  - Summer reading program with the library
  - Gathering space
- **Priorities for Next Steps for Neighborhood Associations from Charrette**
  - Needs to be determined



**PRIDE IN OUR POCKET PARKS CAMPAIGN**

***OCTOBER 2, 2010 CHARRETTE REPORT & NEXT STEPS***



## PROGRAMMING IDEAS FROM THE 1970'S

Janelle Toner brought scrapbooks from the Recreation Dept. activities in the 1970's. This was a time when the parks were well utilized with over 1400 youth participating in summer programs and much collaboration with community organizations.

### Programming Ideas from the 1970's

- Summer playground program
- Summer theatre
- Track & field
- Geneva Women's Softball League (girls and women)
- Geneva Men's Slo-Pitch League
- Summer Outdoor Basketball League
- Scavenger hunts
- Drama program
- Arts & Crafts
- Hula hoop contest
- Boating
- Summer swim program
- Hometown Beautification
- City Tennis
- Tennis instruction program
- Outdoor teen dances
- Basketball free throw tournament
- Indian Lore programs
- "Operation Kids" project
- Basketball clinic
- Softball hitting and throwing contest
- Boy's Summer Wrestling program
- Chartres Homes and Urban Renewal 4-H program
- Boy's Junior Softball League
- Boy's Intermediate Softball League
- Girl's Kickball League
- Geneva Radio Club Telethon

### Organizations that Collaborated with the Rec. Dept. in the 1970's

- Hobart and William Smith Colleges
- Finger Lakes Council Boy Scouts of America (Camp Babcock-Hovey)
- Geneva City School District
- Teton Mountain Dancers of Henrietta
- Ontario County 4-H
- Geneva Men's City Bocce League
- YMCA
- American Legion pool
- Geneva Civic Center
- Only Show in Town (community adult theatrical group)
- Auburn Theatre group
- Senior Citizens Club of Geneva

### Ideas for Possible Organizations to Collaborate with for Park Programming Today

- Geneva Community Center
- Boys & Girls Club of Geneva
- YMCA
- Geneva City School District
- Finger Lakes Council Boys Scouts of America



## **NEXT STEPS**

The following list identifies next steps for the Pride in our Pocket Parks Campaign group to pursue. The ideas were generated both during the charrette and afterwards. The park initiatives and improvements that will be pursued are ones that the Pocket Parks Campaign group will work to move forward with support from the neighborhood associations and the GNRC, and align with the goals and priorities of the City's Recreation Department and Department of Public Works.

### **Investigate Starting a 501c3 - Friends of the City of Geneva Parks**

The charrette group (representing different neighborhood associations) wanted to collaborate together to support each other in pursuing park ideas for each park, to do projects together (such as bulk bench making), and to work towards creating a great city-wide park system. During the charrette the group decided that forming a group called the "Friends of the City of Geneva Parks" would be beneficial.

Parks & Trails New York is currently accepting grant applications until Nov. 22, 2010 for their "Capacity Building Grants for Park and Trail Organizations," which would provide funding for starting up and marketing a Friend of the Park type organization. Amanda Garris and Marty Davis volunteered to look into applying for this grant along with Sage Gerling. This smaller group met after the charrette and decided to wait to apply for the grant until 2011, which would allow the group to spend a year seeing if a non-profit was the most beneficial platform for the group, working on the group's missions and goals, and recruiting neighborhood volunteers.

### **Establish Unique Identity for Each Park**

During the large group discussion, the group decided that each park should have a unique identity. The unique identity would provide more park amenities and programming for the whole community and encourage residents to use multiple parks. During the small group discussions ideas for the unique identity of some of the parks were suggested. Below is a recap of the charrette ideas for the unique identities, which will need to be reviewed and decided upon by the group:

- Bicentennial Park – Concert and event location, passive games and relaxing area, and lunch time eating area
- Brook St. Park – Adult usage park and possibly a dog park
- Chartres Park – Needs to be identified
- Genesee Park – Passive recreational park and connector
- Gulvin Park – Needs to be identified
- Jefferson Park- Dog park
- Lafayette Circle Park - Passive recreational park- reading, sitting and relaxing
- Nieder Park – Youth play area, adult gathering spot, and a natural area park
- Pulteney Park – Memory/history park
- Richards Park – Art and dog park

## **PRIDE IN OUR POCKET PARKS CAMPAIGN**

***OCTOBER 2, 2010 CHARRETTE REPORT & NEXT STEPS***

- Ridgewood Park – Sports complex
- Washington Park - Mixed use- intellectual park both active and passive

### **Establish Neighborhood Association Priorities for Each Park**

Some of the neighborhood association priorities were established during the charrette for individual parks and should be confirmed. These priorities are physical amenities and programming ideas that the associations would like to pursue first as projects. Priorities need to be identified for the following parks:

- Chartres Park
- Genesee Park
- Gulvin Park
- Jefferson Park
- Pulteney Park
- Ridgewood Park
- Washington Park

### **Identify Funding Sources**

Below are possible funding sources brainstormed during the charrette:

- Forming a non-profit “Friends of the City of Geneva Parks (see 501c3 discussion above)
- Collaborating with the Geneva Community Projects organization (especially for arts-oriented projects or open air concert pavilion)
- Neighborhood Association fundraisers
- Finger Lakes Health for park programming or fitness track

### **Identify Partnerships for Physical Amenity Design or Building Assistance**

Below are possible partnerships for design and building assistance identified during the charrette:

- HWS Architectural Studies Program student association
- HWS Architectural Studies Program’s welding and wood shop courses with Sam Castner
- HWS Day of Service volunteers

### **Additional Strategies to Pursue**

- Neighborhood policing strategies – establish a routine park patrol